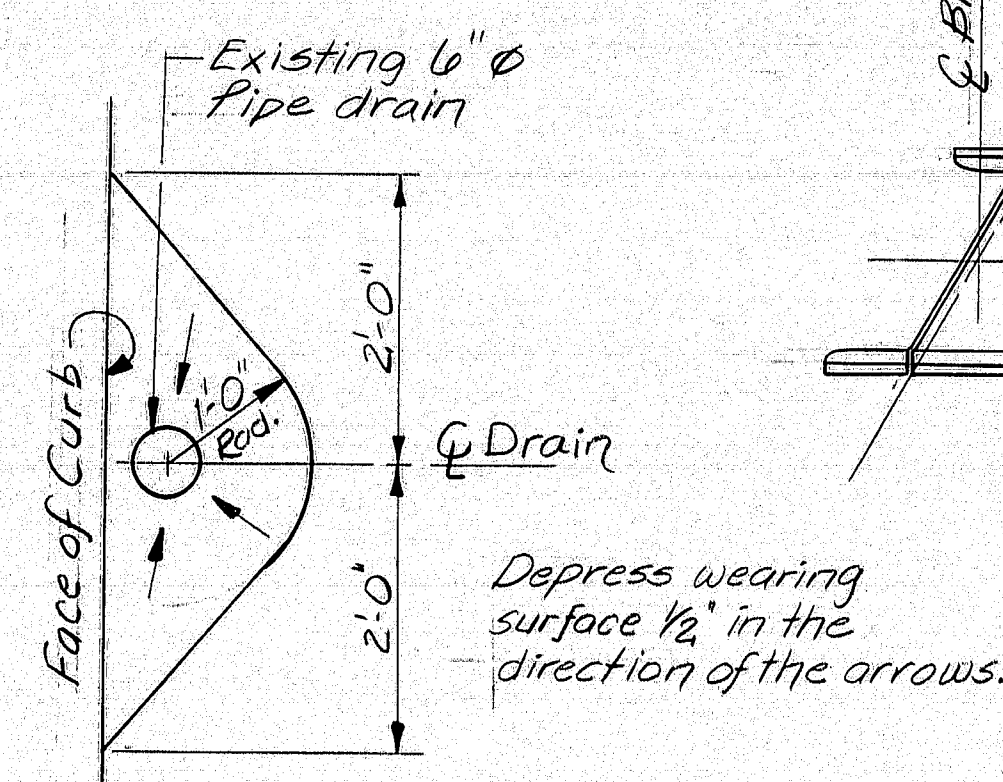
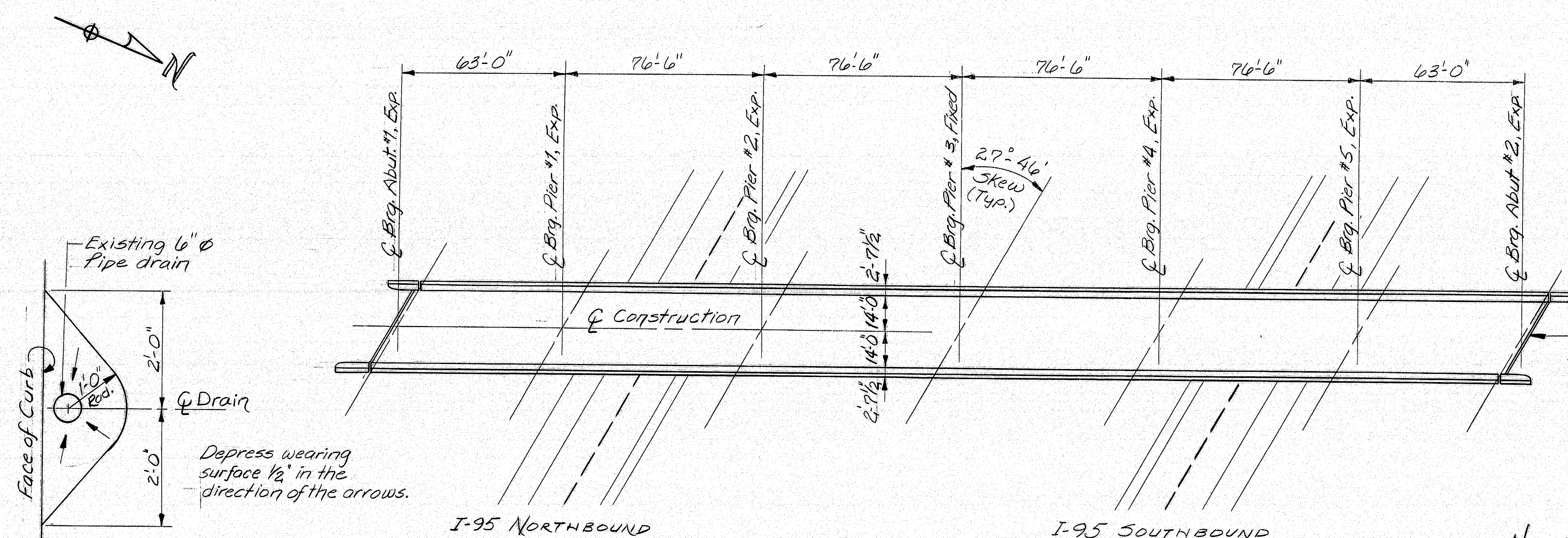


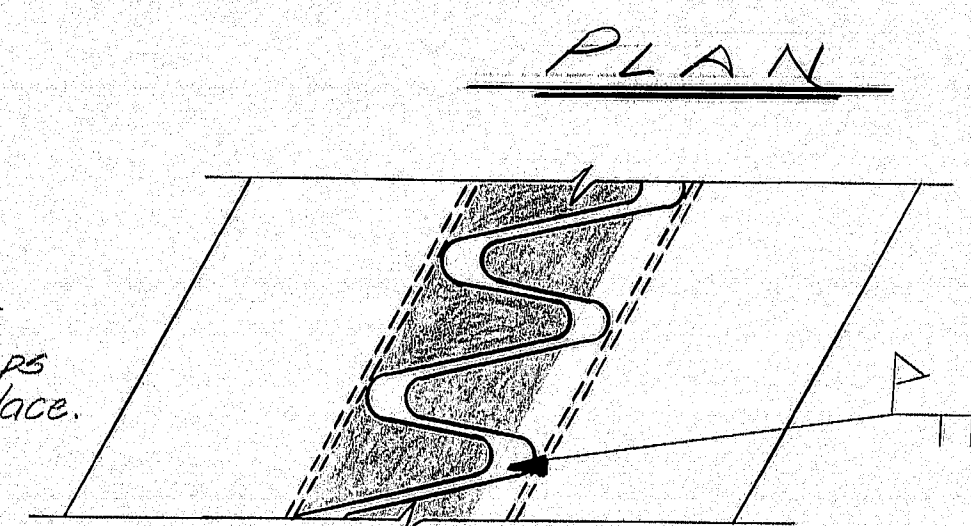
TOWN	STATE	PROJECT NUMBER	SHEET NO.	TOTAL SHEETS
MAINE	MAINE	5967	1	1



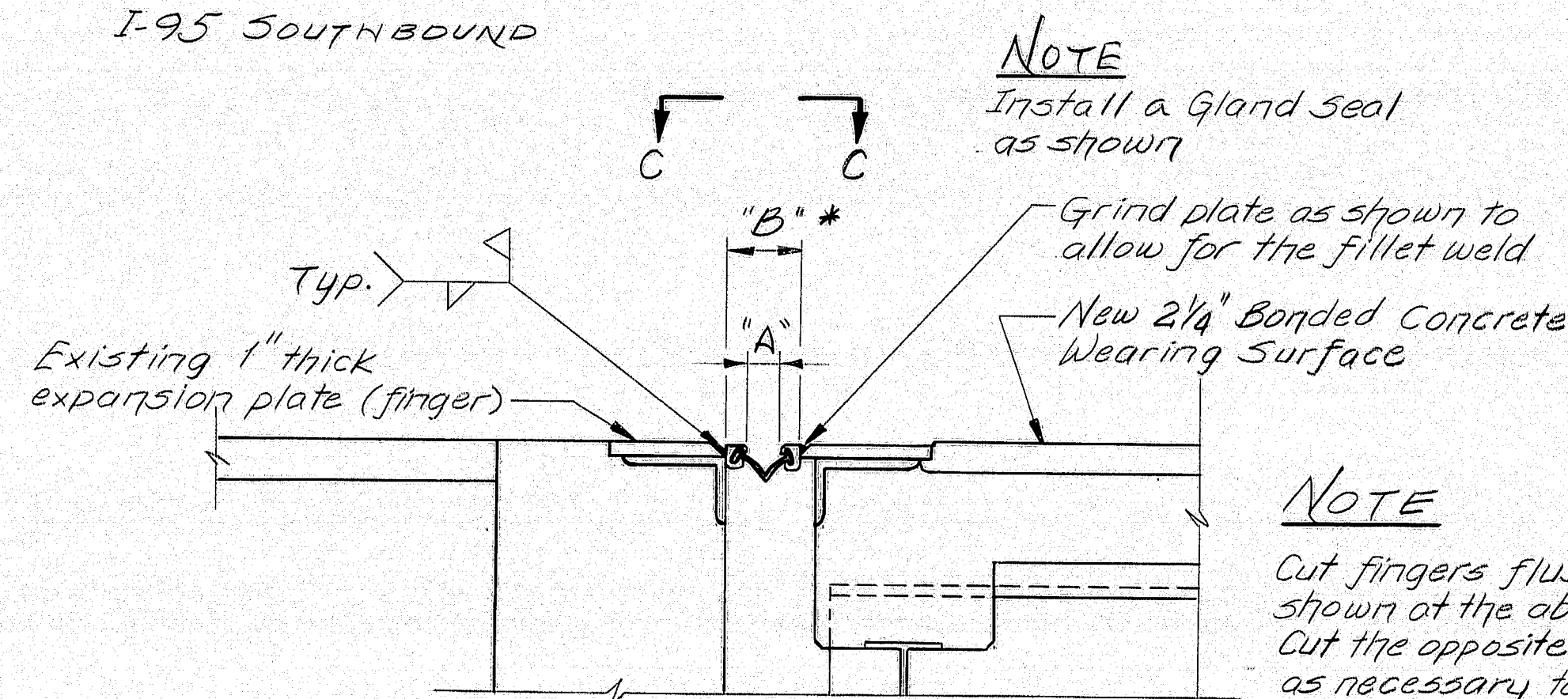
DRAIN DETAIL

NOTE

Cut tips of fingers as shown in the shaded portions. Use these pieces to fill the gaps after the extrusions are in place. Sides must be cut parallel.



VIEW C-C



SECTION D-D

BONDING GROUT NOTES

The deck surface must be thoroughly sandblasted and cleaned to remove all dust or loose materials immediately before bonding grout is placed.

Deck surface to be surface dry with no standing water in pockets or low areas when bonding grout is applied.

The bonding grout shall consist of equal parts by weight of Portland Cement and concrete sand with the plus #8 material removed and mixed with enough water to give a thick, creamy consistency.

Bonding grout to be evenly broomed onto the concrete surface ensuring that the entire surface, including face of curb to the finish grade of the wearing surface, is coated and that no excess grout collects in low spots or pockets. Grout shall be thoroughly broomed under and around reinforcing bars.

Rate of application must be controlled so that the grout does not dry before the new concrete is placed.

SCOPE OF WORK

Remove the existing bituminous pavement and membrane waterproofing. Clean and sand blast deck as noted. Install a 2 1/4" bonded concrete wearing surface. Install a Gland Seal at each end of the bridge as shown.

MATERIALS

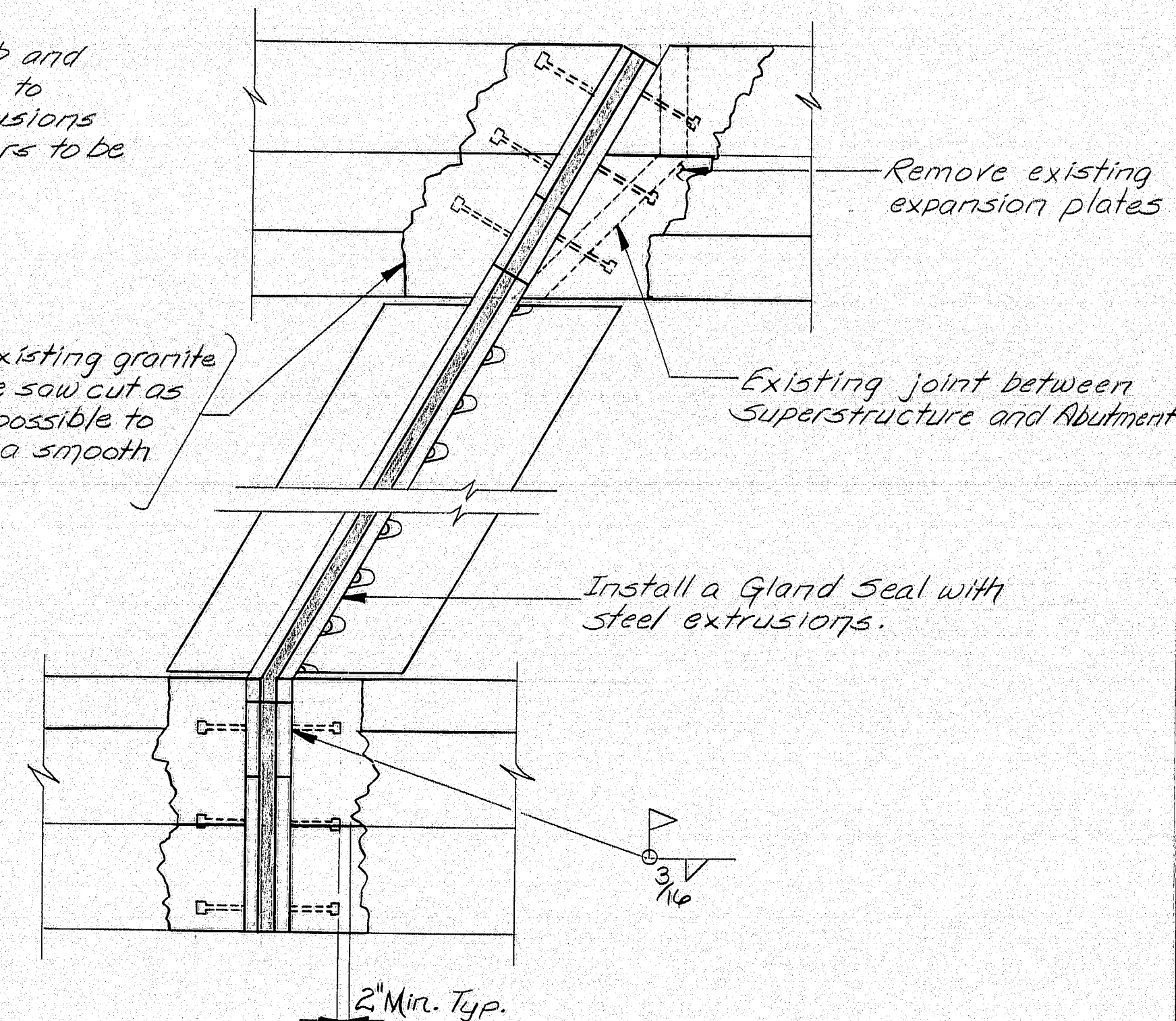
2 - Gland Seals (Watson Bowman & Acme #SE-400) including steel extrusion x 40'-0" long
90 c.y. of Wearing Surface Concrete
25 ea. - 1/2" dia. x 6" machine bolts

NOTE

Cut fingers flush as shown at the abutment. Cut the opposite fingers as necessary to meet dimension "B".

GENERAL NOTES

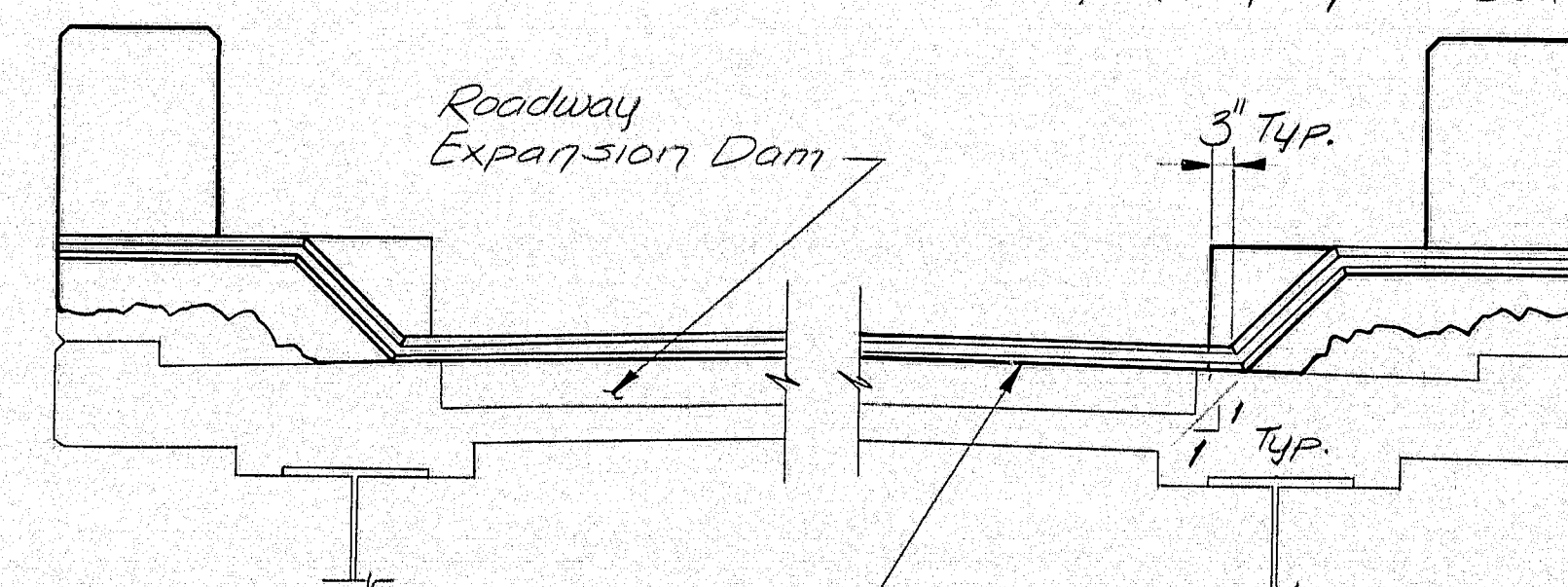
- Remove existing wearing surface.
- If main reinforcing steel is exposed, concrete should be removed under the steel to a depth of 1" minimum.
- Blast clean the slab before any placement of bonding grout or concrete. Note: SLAB IS TO BE SURFACE DRY BEFORE PLACEMENT OF BONDING GROUT.
- Broom on a layer of bonding grout just prior to placing concrete. See bonding grout notes this sheet.
- Concrete to be cured using burlap and water.
- Concrete to be Class "V" and aggregate to be crushed ledge.
- Minimum cover to be 2" unless otherwise noted.
- Chamfer all exposed edges of concrete 1/2" unless otherwise noted.



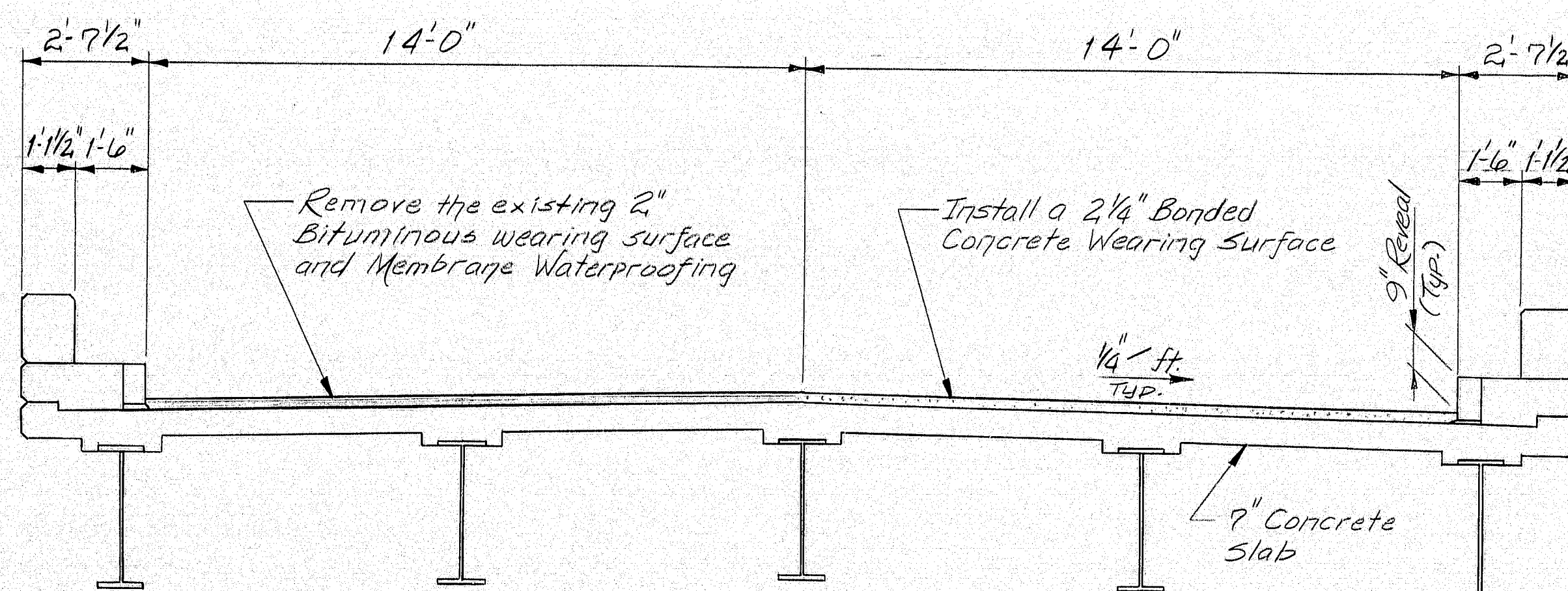
EXPANSION JOINT - PLAN

NOTE

Remove a portion of the curb and parapet and completely remove the expansion dam (in the curb area only) as necessary to install the gland seal.



EXPANSION JOINT - PLAN



TRANSVERSE SECTION

TEMPERATURE ADJUSTMENT											
TEMP °F	0	10	20	30	40	50	60	70	80	90	100
Opening at Abutment #1	2 3/8"	2 3/4"	2 1/2"	2 1/4"	2 1/8"	2"	1 7/8"	1 5/8"	1 1/2"	1 1/4"	1 1/8"
Abutment #2	2 3/8"	2 3/4"	2 1/2"	2 1/4"	2 1/8"	2"	1 7/8"	1 5/8"	1 1/2"	1 1/4"	1 1/8"

* To Determine dimension "B" add 2 1/2" to the appropriate dim. "A"

PROJECT DESIGN ENGINEER	DATE
BY	4/89
DESIGN - DETAIL	
CHECKED	
FIELD CHANGES	
PLANS	

BURNING 44-132-65710-1

STATE OF MAINE
DEPARTMENT OF TRANSPORTATION
ROUTE 69 BRIDGE
OVER
INTERSTATE 95
IN
NEWBURN
PENOBSCOT COUNTY
GENERAL PLANS
SHEET 1 OF 1 AUGUSTA, MAINE APRIL 1989

111-9